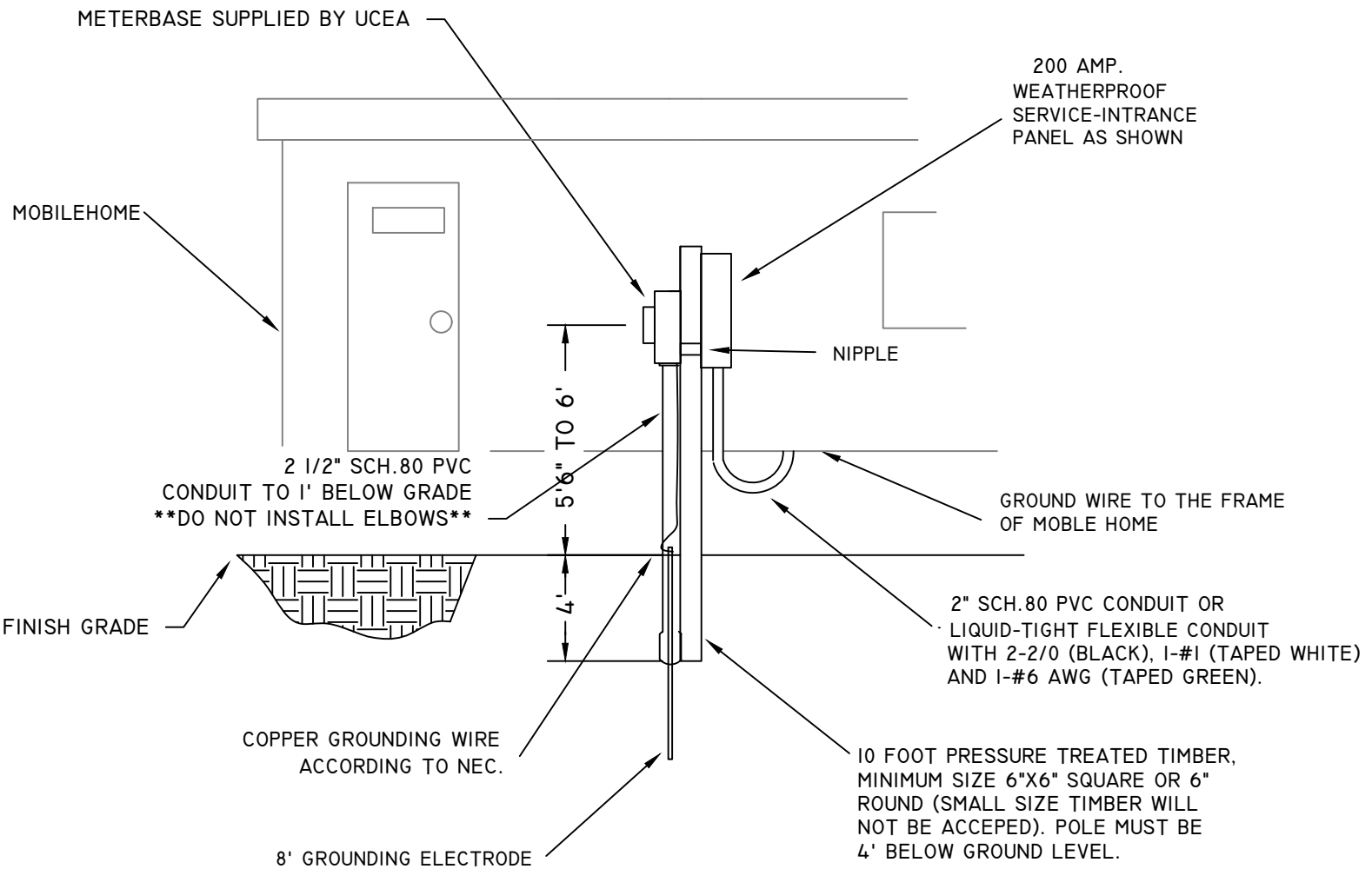


UNION CITY ENERGY AUTHORITY

TYPICAL 200 AMP. UNDERGROUND MOBILE HOME SERVICE SPECIFICATIONS

SERVICE EQUIPMENT

THE MOBILE HOME SERVICE EQUIPMENT SHALL BE LOCATED ADJACENT TO AND NOT MORE THAN 12 INCHES FROM THE MOBILE HOME. UNLESS THE HOME IS EQUIPPED WITH A FACTORY INSTALLED SERVICE ENTRANCE THE EQUIPMENT SHALL NOT BE MOUNTED ON THE MOBILE HOME



NOTE: ALL WIRING MUST COMPLY WITH THE STATE AND NATIONAL ELECTRICAL CODES

IF SERVICE POLE IS MORE THAN 1 FT. FROM SIDE OF MOBILE HOME, CONDUIT BETWEEN POLE AND MOBILE HOME MUST BE BURIED
METER LOCATION MUST BE APPROVED BY AN EMPLOYEE OF UCEA

DATE: 10/16/00